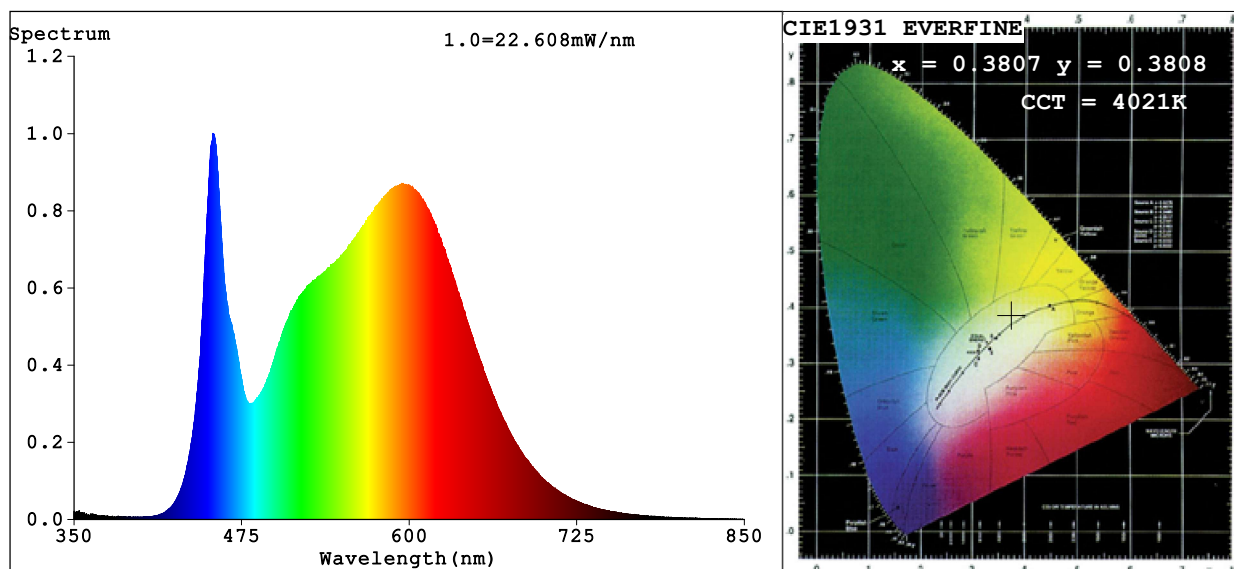


Spectrum Test Report



Color Parameters:

Chromaticity Coordinate: $x=0.3807$ $y=0.3808$ $u'=0.2237$ $v'=0.5034$

CCT=4021K (Duv=0.0018) Dominant WL:Ld =578.0nm Purity=28.5%

Ratio:R=18.4% G=77.7% B=3.9%; Peak WL:Lp=453.6nm FWHM=22.4nm

Render Index:Ra=84.3 CRI=78.1 TM30:Rf=83 Rg=94

R1 =83 R2 =92 R3 =96 R4 =82 R5 =83 R6 =88 R7 =86

R8 =65 R9 =12 R10=80 R11=81 R12=62 R13=85 R14=99 R15=76

Photo Parameters:

Flux = 1133 lm Eff. : 115.70 lm/W Fe = 3.439 W

Electrical parameters:

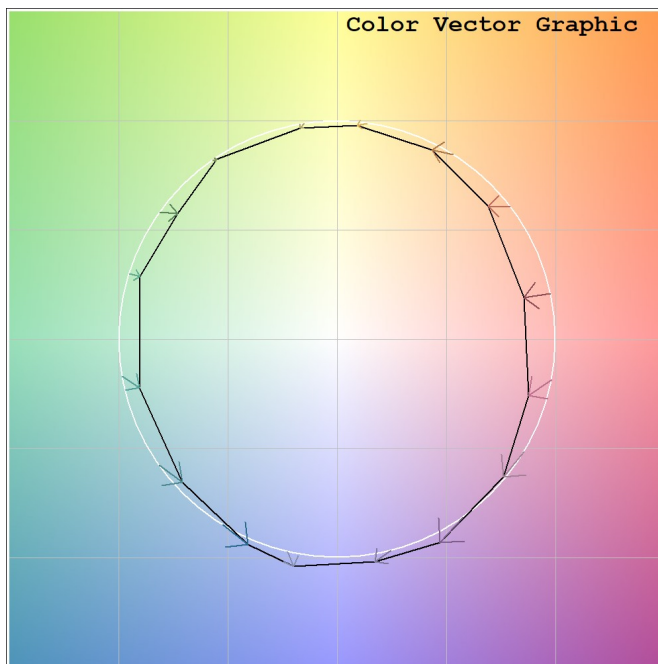
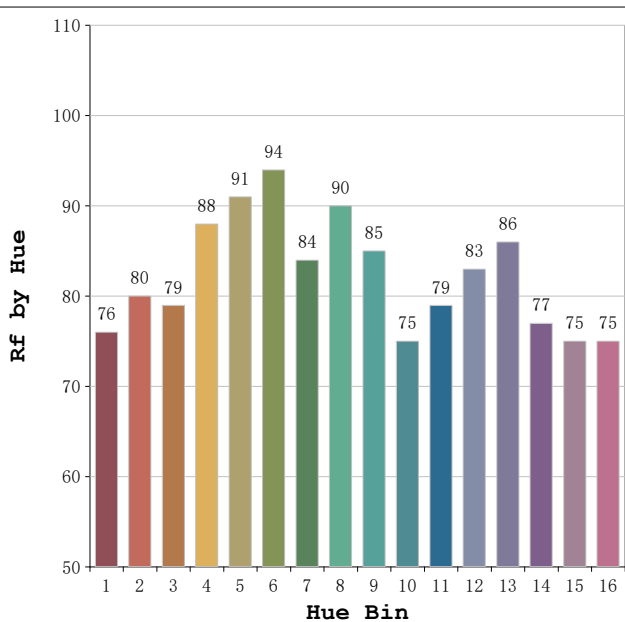
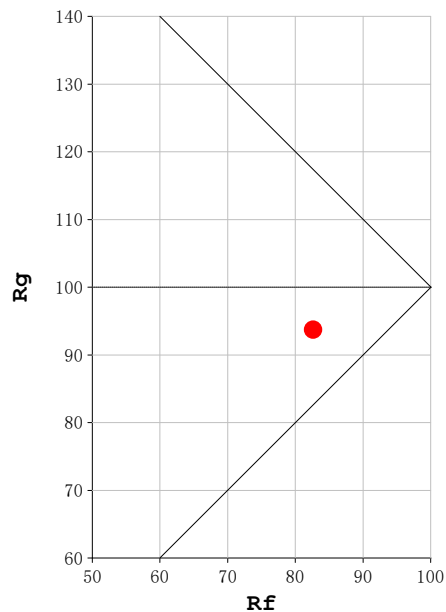
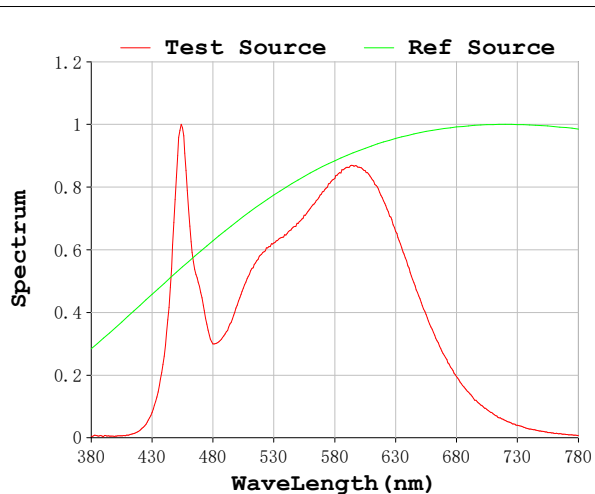
V = 23.998 V I = 0.4080 A P = 9.791 W PF = 1.000

Status: Integral T = 1090 ms Ip = 43594 (67%)

Model:Ecoled Roll to roll
Tester:Sergio Carneros
Temperature:20Deg
Manufacturer:Luz Negra

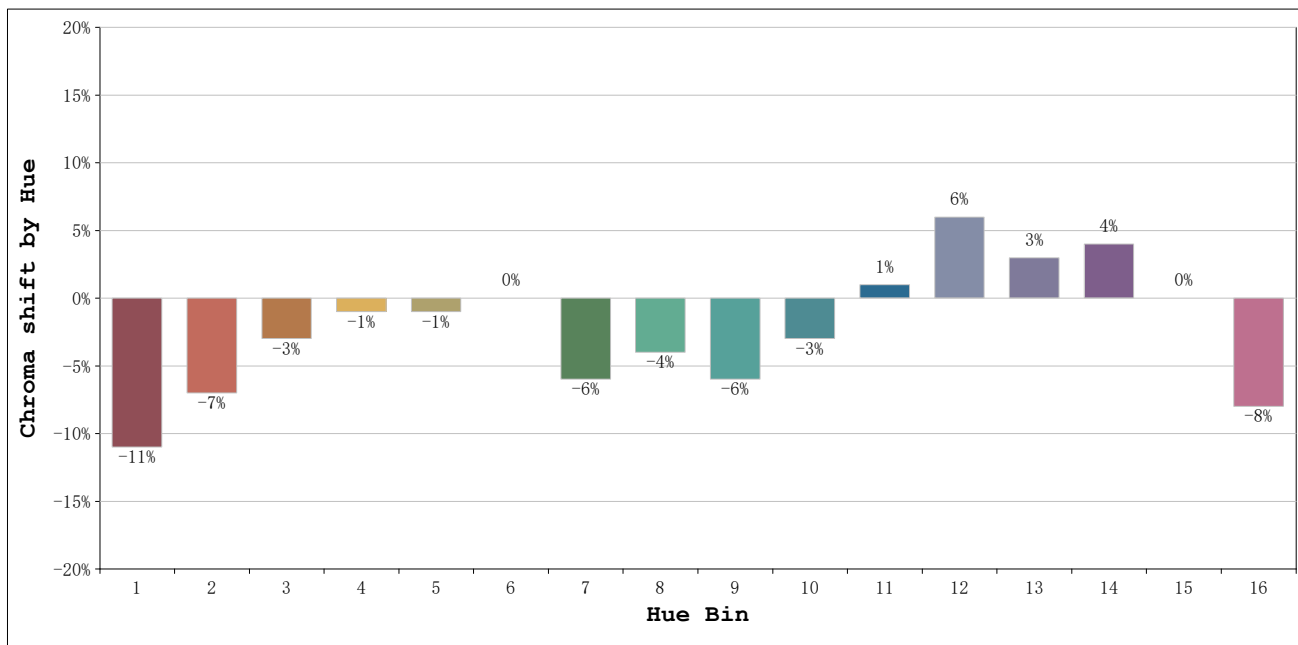
Number: 31.269
Date:2025-06-16 16:43:39
Humidity:50%
Remarks:100cm de tira flexible

Rf: 83 **CCT: 4021 K** **u': 0.2237**
Rg: 94 **Duv: 0.0018** **v': 0.5034**



Model:Ecoled Roll to roll
 Tester:Sergio Carneros
 Temperature:20Deg
 Manufacturer:Luz Negra

Number: 31.269
 Date:2025-06-16 16:43:39
 Humidity:50%
 Remarks:100cm de tira flexible



Hue Bin	Hue Angle	Rf	Graphic shift(%)	
			Chroma	Hue
1	0.0° - 22.5°	76	-11	1
2	22.5° - 45.0°	80	-7	6
3	45.0° - 67.5°	79	-3	9
4	67.5° - 90.0°	88	-1	4
5	90.0° - 112.5°	91	-1	2
6	112.5° - 135.0°	94	0	-1
7	135.0° - 157.5°	84	-6	-3
8	157.5° - 180.0°	90	-4	0
9	180.0° - 202.5°	85	-6	7
10	202.5° - 225.0°	75	-3	13
11	225.0° - 247.5°	79	1	14
12	247.5° - 270.0°	83	6	4
13	270.0° - 292.5°	86	3	-7
14	292.5° - 315.0°	77	4	-14
15	315.0° - 337.5°	75	0	-14
16	337.5° - 360.0°	75	-8	-8

Model:Ecoled Roll to roll
 Tester:Sergio Carneros
 Temperature:20Deg
 Manufacturer:Luz Negra

Number: 31.269
 Date:2025-06-16 16:43:39
 Humidity:50%
 Remarks:100cm de tira flexible